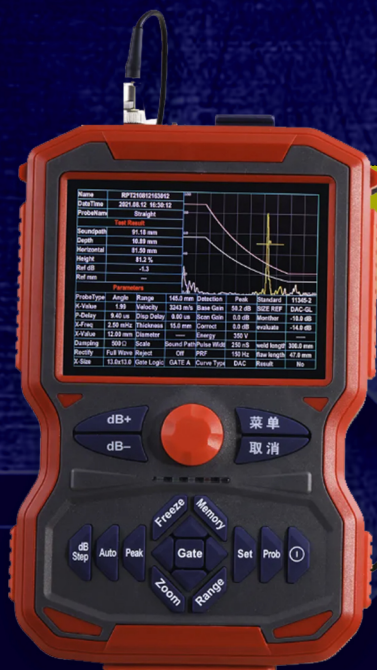


Uee981

Ultrasonic Flaw Detector



Technical Parameters

Model	Uee981S ^{mart}	Uee981O ^{ptimum}	Uee981E ^{xpert}
Scan Range(mm)	0~10000mm	0~12000mm	0~15000mm
Velocity Range (m/s)	1000~15000	500~18000	100~20000
Gain Range(dB)	110dB	120dB	120dB
Operating Frequency	0.2~20MHz	0.2~25MHz	0.2~35MHz
Pulse Repetition Frequency	10~1500Hz	10~2500Hz	10~3000Hz
Vertical linearity error	≤2.5%	≤2.5%	≤2.5%
Horizontal linearity error	≤0.2%	≤0.2%	≤0.2%
Sampling Frequency	150Mhz	200Mhz	320Mhz
Transducer Frequency Max.	15MHz	20MHz	30MHz
Dynamic Range	≥38dB	≥38dB	≥38dB
Resolution	≥40dB	≥40dB	≥40dB
Testing sensitivity	≥65dB	≥65dB	≥65dB
Pulse amplitude	100V~500V	100V~500V	100V~500V
Pulse Width	0.03~0.51μs	0.03~0.51μs	0.03~0.51μs
Transducer Damping	50Ω~400Ω	50Ω~400Ω	50Ω~400Ω
Interface for Probe cable	BNC (Optional LEMO)	BNC (Optional LEMO)	BNC (Optional LEMO)
Working mode	7 modes: Straight / Angle / Dual crystal probe, Penetrating detection and etc.		
Power Supply	100-240V 50-60Hz; DC 9V Rechargeable Li-ion battery, 10+ hours life		
Dimension & Weight	Dimension 240×153×38mm; Net weight 0.98kg (with Li-ion battery)		
Environment	Temperature -10~50°C, Humidity 20~95%RH		

Configuration

Function	Uee981S ^{mart}	Uee981O ^{ptimum}	Uee981E ^{xpert}
Square wave pulser	•	•	•
DAC/ DGS / AVG diagram	•	•	•
TCG	○	•	•
Color B-Scan	○	•	•
AWS	○	○	•
Automatic Calibration (V2)	•	•	•
PC Connection	•	•	•
Bluetooth Connection	○	•	•
External Storage (USB)	•	•	•
Detection Video	○	•	•



Standard Delivery



LINE : @ITOKIN2000
 TEL : 02-9744354-6
 EMAIL : SALESITOKIN@GMAIL.COM



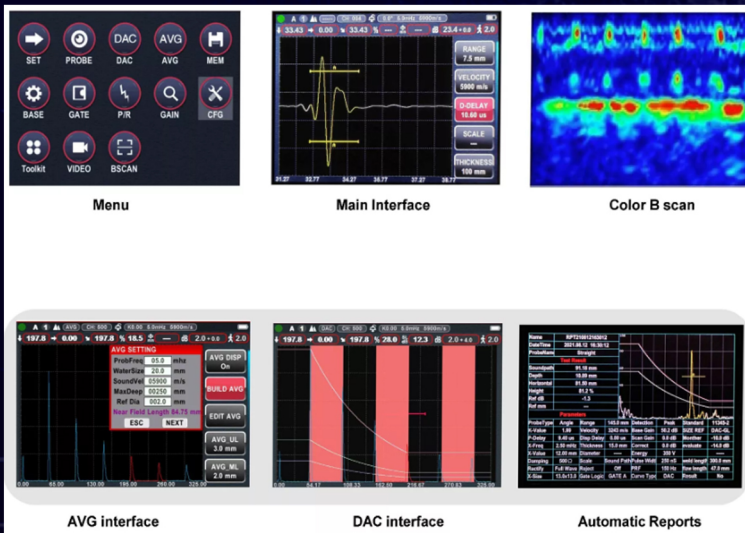
Ultrasonic Flaw Detector

UEE981



Functions & Features

- IP65, with portable and ultra-thin design
- Meet the standard requirements of EN12668-1
- Square wave pulser, PRF up to 3 kHz for fast scanning
- High-speed sampling for clear & stable echo diagram with all details
- High numbers of digital filters, suitable for nearly any application
- Anti-noise design, high signal-to-noise ratio, perfect for tough working conditions
- With standard DAC/ DGS / AVG function
- Reports can be automatically formed and viewed on the equipment
- PC connection for data management and reports printing on-site
- Storage: 1000 groups of data (expandable); External USB for directly storage (unlimited memory)
- Battery life ≥ 10 hours, with fast independent charging control
- Language: English (expandable: German / Turkish / Korean / Spanish and etc)



Standard Delivery:

- * Main unit
- * Probe and Cable x2
- * Power Adapter & Battery
- * PC software
- * Carry Strap
- * Manual
- * Certificate & Documents
- * ABS Instrument Box

**Mobile app with Optimum & Expert model
V2 Calibration block with Expert model
This item is by order only.**



LINE : @ITOKIN2000
TEL : 02-9744354-6
EMAIL : SALESITOKIN@GMAIL.COM